

## Windows and doors / Roof claddings

### Window 28 & 45 mm

Fixed or opening window with decorative or working shutters		Fixed window	Fixed window
±60 x 95 cm ■ ● ±81 x 95 cm ■ ● ±101 x 95 cm ■ ●	±120 x 95 cm ■ ● (double window)	±60 x 95 cm ■ ● ±81 x 95 cm ■ ● ±101 x 95 cm ■ ●	±188 x 56 cm ● (acid glass) ±121 x 56 cm ■ ● (clear or acid glass)

### Door 28 & 45 mm

Solid wood door	1/2 glass door	3/4 glass door with or without working shutters	1/2 glass double door	Solid wood double door
±80 x 188 cm ■ ● ±100 x 188 cm ■ ●	±80 x 188 cm ■ ●	±80 x 188 cm ●	±140 x 188 cm ■ ●	±140 x 188 cm ■ ●

### Door 28 & 45 mm

1-panel solid wood door	3-panel glass door	1-panel solid wood double door	3-panel double glass door	2-panel solid wood door
±80 x 188 cm ■ ●	±80 x 188 cm ● (clear or acid glass)	±140 x 188 cm ■ ●	±140 x 188 cm ● (clear or acid glass)	±80 x 188 cm ●

### Door 28 mm

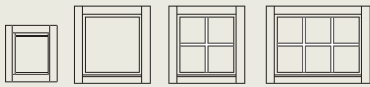
### Sliding door 28 & 45 mm

Single sliding door (sliding from left to right)	Double sliding door	Double sliding door with 2 fixed windows
±100 x 188 cm ■ ● (acid glass)	±160 x 188 cm ● (acid glass)	±160 x 188 cm ● (acid glass) ±56 x 188 cm ● (acid glass)

■ Untreated wood ● Pressure-treated wood

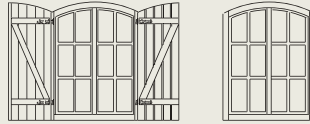
## Window 45 mm

Bottom hinged window



±56 x 56 cm ■ ● (only 28 mm)  
 ±78 x 82 cm ■ ●  
 ±108 x 82 cm ■ ●

Double opening window with arch, with or without working shutters



±110 x 145 cm ■ ●

## Roof claddings

### Felt shingles



Brown-red  
 Green  
 Black  
 (1)

### Steel tiles



Terracotta  
 Black  
 (1)

### Cement tiles



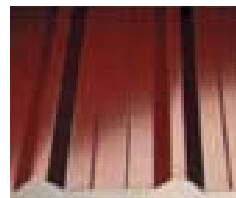
Brown  
 Black  
 (1)

### Polycarbonate panels (1 cm thick)



Opal  
 (3)

### Steel panels



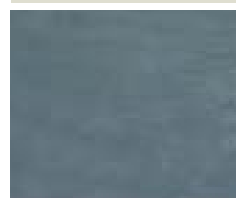
Brown-red  
 (standard not insulated)  
 (2)

### Coolgreen



(2)

### EPDM



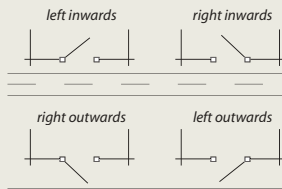
(1)

3/4 glass double door with or without working shutters



±140 x 188 cm ■ ●

Door opening direction (not always applicable)



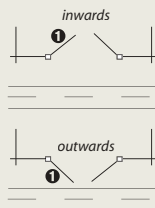
## Door 45 mm

3/4 glass double door with arch, with or without working shutters



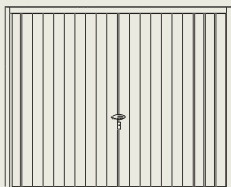
±120 x 188 cm ■ ●

Double door opening direction (not always applicable)



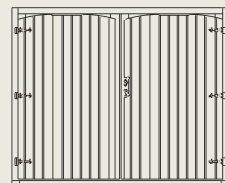
## Garage door

Wood or brown metal up & over door



250 x 200 cm ■ ●

Double hinged solid wood door



±235 x 190 cm ■ ●

Roof substructure: 16 mm boards: (1) standard, (2) option, (3) never