

Before assembly

- We recommend that time is taken to read the instructions before starting assembly, then follow the easy step by step guide. The instruction sheet is only a guide to the assembly. Certain items may not be shown to scale.
- Check all components prior to assembly
- This product should be assembled by no less than 2 people.
- Some of the components may have sharp edges wear protective work gloves while handling components.
- Never attempt to erect the assembly in high winds.
- Drill all components where indicated.

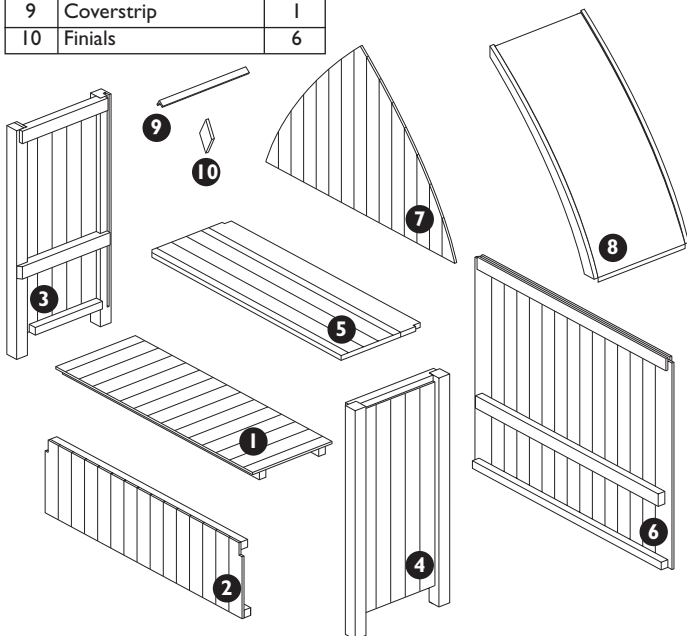


Recommended tools for assembly

- Cross head screw driver
- Drill with 4mm diameter drill bit
- Step ladder

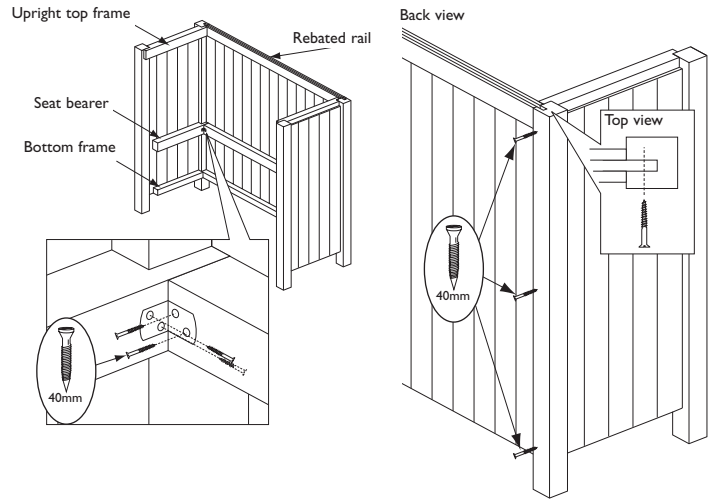
No.	Components	Qty.
1	Floor	1
2	Seat front	1
3	Left-hand upright	1
4	Right-hand upright	1
5	Seat	1
6	Seat back	1
7	Triangular panel	1
8	Roof sections	2
9	Coverstrip	1
10	Finials	6

No.	Fixing Kit	Qty.
11	Screws 70mm	4
12	Screws 50mm	10
13	Screws 40mm	62
14	Screws 30mm	16
15	L-brackets	9
16	Flat brackets	1



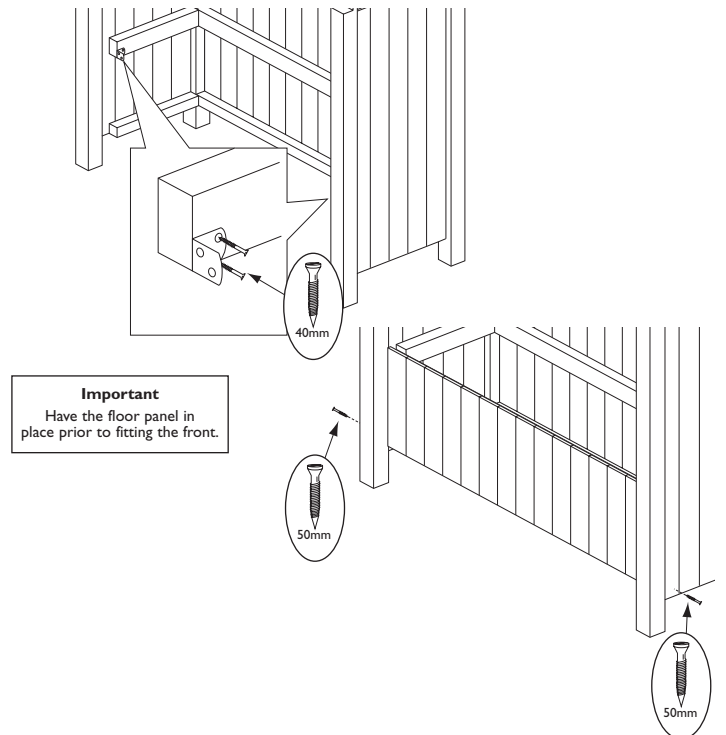
1. Back to uprights

Fit the back panel into the slots of the left-hand upright. Make sure the seat bearer is on the inside and that the rebated rail is at the top. Secure together by using 3 x 40mm screws, screw through the leg of the upright, ensuring the screw goes through the rebate in the leg and back panel, secure the seat bearers of the 2 panels with L-brackets and 4 x 40mm screws per bracket. Repeat for the right-hand upright.



2. Seat front and floor

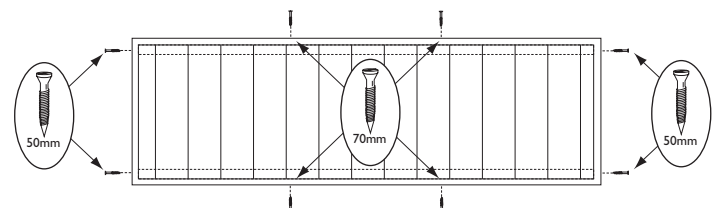
Fit L-brackets flush to the front end of the seat bearer on each upright as shown using 2 x 40mm screws per bracket. Prior to fitting the seat front, have the floor in place. Lift the seat front between the uprights. Ensure the top of the panel is level with the top of the seat bearers and secure with the L-brackets using 2 x 40mm screw per bracket. Fix the panel at the bottom by screwing through the upright panel into the end of the framing at the bottom of the front panel using 1 x 50mm screw at each end.



Important
Have the floor panel in place prior to fitting the front.

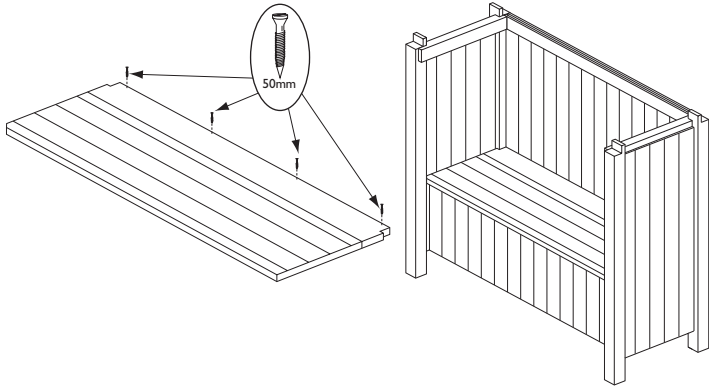
3. Secure the floor

Secure the floor using 4 x 50mm screws, screw 2 through each upright into the ends of the floor framing, using 4 x 70mm screws, screw 2 through the front and 2 through the back panel into the floor framing.



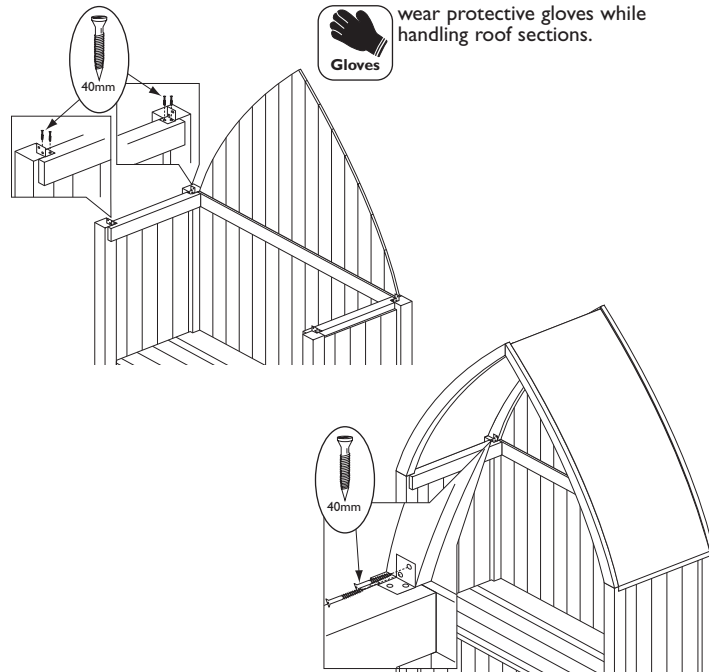
4. Seat

Place seat on the seat bearers with the hinges at the back. Make sure it is square and is able to open freely. Screw to the back panel seat bearer using 4 x 50mm screws.



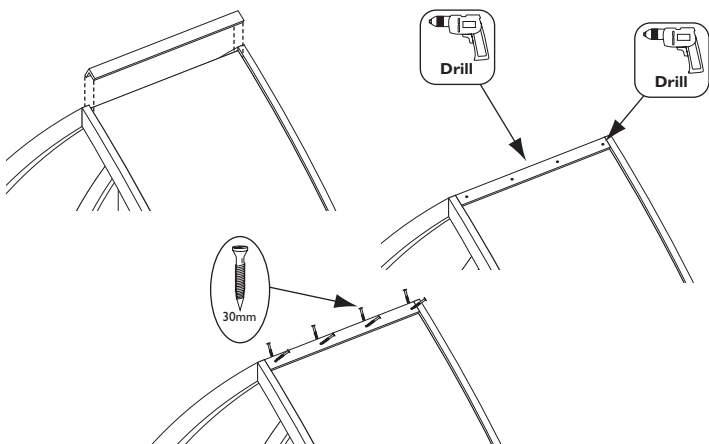
5. Roof Assembly

Lift the triangular panel into the rebate of the seat back. Lift on the roof panels with the rebated rafters at the back of the arbour ensure the triangular panel fits into the rafter rebates. Mark the position of each L-bracket. Remove the roof and secure the L-brackets to the top of the uprights using 2 x 40mm screws per bracket. Replace the roof and secure through the brackets into the roof panels using 2 x 40mm per bracket.



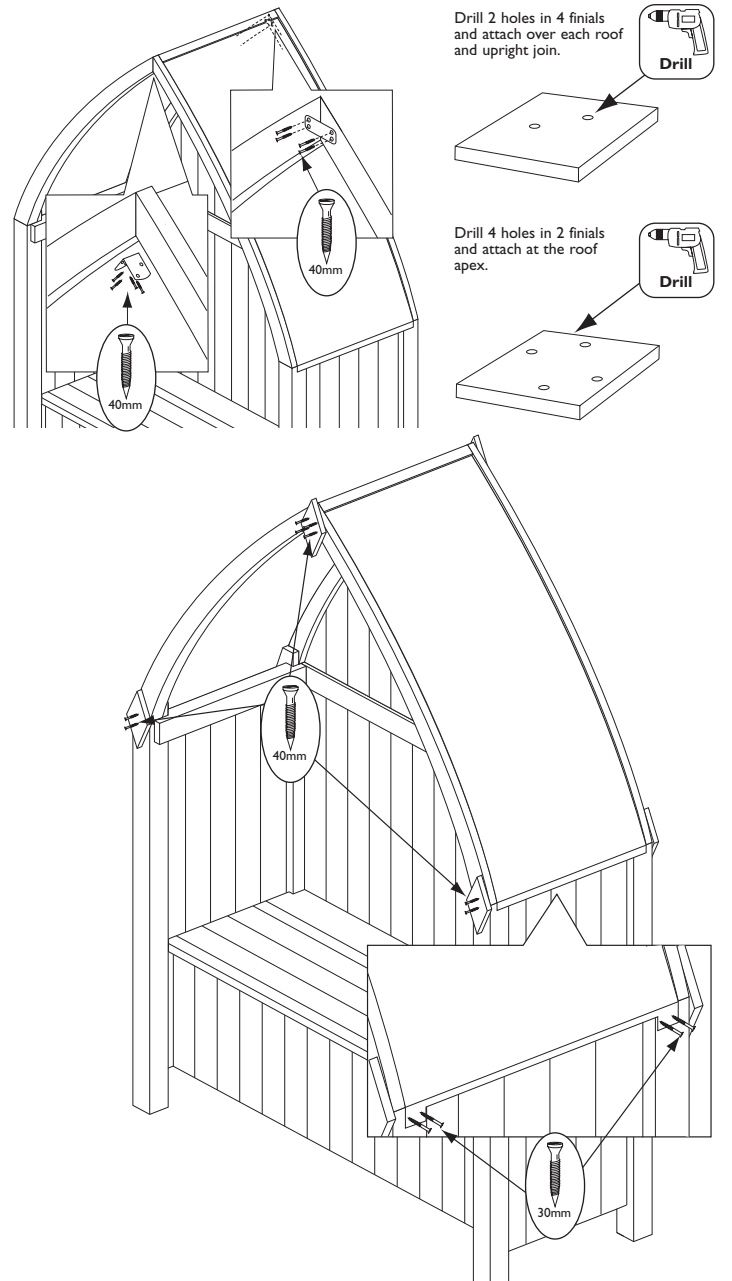
6. Coverstrip

Place the coverstrip on the roof apex, Drill 4 holes in each side and secure using 8 x 30mm screws.



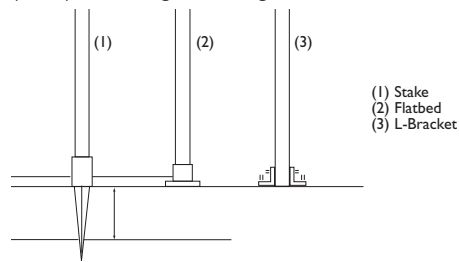
7. finials

Hold the apex of the roof together by securing an L-bracket using 4 x 40mm screws to the underside of the front 2 rafters. Use the flat bracket to join the back 2 rafters, secure across the join on the inside of the roof using 4 x 40mm screws. Drill 2 holes in 4 finials as shown below. Attach finials over each roof and upright joint, 2 on the front and 2 on the back. Drill 4 holes in the remaining finials, position 1 on the front and 1 on the back over the join of the the 2 roof panels at the apex. Use 4 x 40mm screws per finial. Attach the metal roof to the upright legs using 2 x 30mm screws per leg as shown in the diagram.



8. Securing the posts

Place the arbour in the desired location. For a more permanent base fixture use a metal base fixing. To secure the bottom of the upright posts into the ground use (1 & 2). If securing to decking or concrete base use metal L-brackets (3).



If in doubt of any aspect regarding the assembly, use or safety of your arbour please contact us :

Help Line (Normal Office Hours) 01829 261121

ROWLINSON GARDEN PRODUCTS LIMITED
Unit 2 Green Lane
Wardle Nr.Nantwich
Cheshire
CW5 6BN
Tel : 01829 262080
Fax : 01829 262089

We constantly improve the quality of our products, occasionally the components may differ from the components shown and are only correct at time of printing. We reserve the right to change the specification of our products without prior notice.

2006 © Rowlinson Garden Products Ltd