


LUGARDE



‘SIMPLY THE BEST’

AFFORDABLE QUALITY PRODUCTS FROM HOLLAND

WWW.LUGARDE.COM

LUGARDE, FOR MORE THAN 35 YEARS HAS BEEN YOUR FIRST CHOICE FOR ALL-YEAR-ROUND GARDEN PLEASURE

Lugarde, stands for quality,
service and flexibility

Whether it be a summerhouse, log cabin, garage or veranda, by owning a product from Lugarde you will enjoy many relaxing moments together with your family and friends or you can just relax by yourself in the peace and quiet of your own surroundings.

Custom made at standard prices!

Lugarde produce everything themselves and because of this we are completely flexible to fulfil all your wishes. You can make modifications to all our standard garden buildings or you can create your own individual design. At Lugarde we are here to make your ideas become reality, and all this at no extra charge. Everything is possible and actually nothing at Lugarde is ever standard.

Also available in colour!

For only a small surcharge your summerhouse, log cabin, garage or veranda can now be delivered in colour. You have the choice of 4 different finishes and your garden building will be maintenance free for up to 2 to 5 years (depending on weather conditions).

Endless variety in our program.

We also have a very extensive program in 2 different construction systems. The log cabin system is available in wood thicknesses of 44mm and 68mm and the Lugarde designed 3=1 system is available in 28mm and 44mm.

The 3=1 system is a unique system, whereby you can slide the wall sections into the corner uprights without having to use any nails or screws. These corner uprights are lined with aluminium on the inside creating a very robust construction. We also offer a very

extensive programme of windows and doors.
Available in single or double-glazing.



ADVANTAGES AND OPTIONS OF

ADVANTAGES:

1 Finished with metal ridge capping piece.



2 Finishing with double bargeboard and weatherboard.



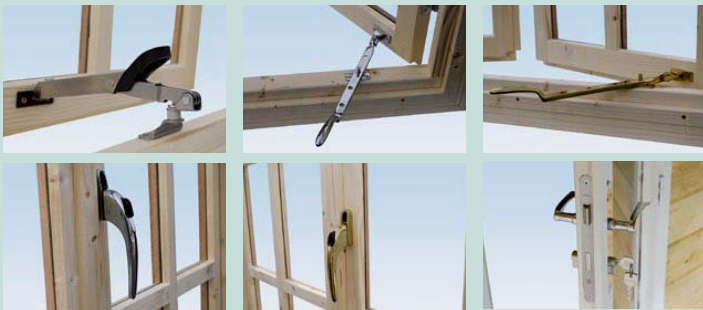
3 Resistance to wind and rain thanks to chalet milling.



4 Laminated doors, i.e. slow to warp.

5 Single and double glazing windows and doors are fitted with:

- Handy detachable bars, inside and outside
- Silicone glazing
- Rubber draught excluders
- Ventilation holes
- Single glazing: when necessary fitted with safety glass



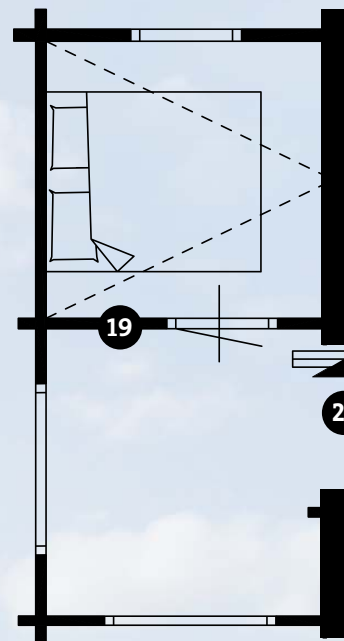
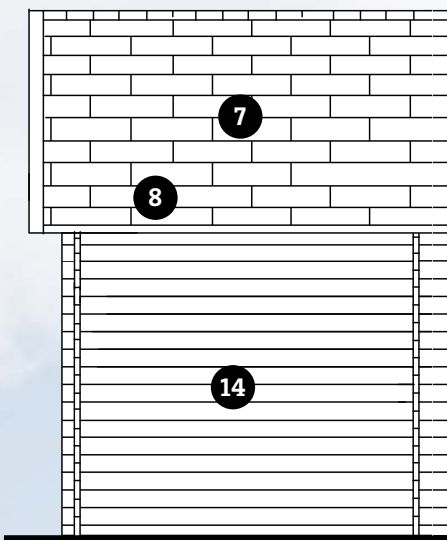
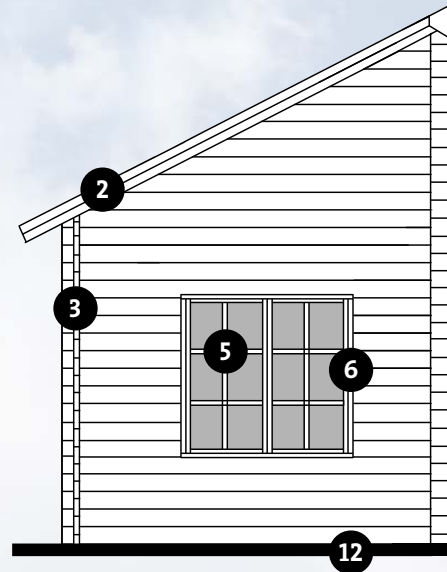
6 Handy adjustable hinges with protection covers.



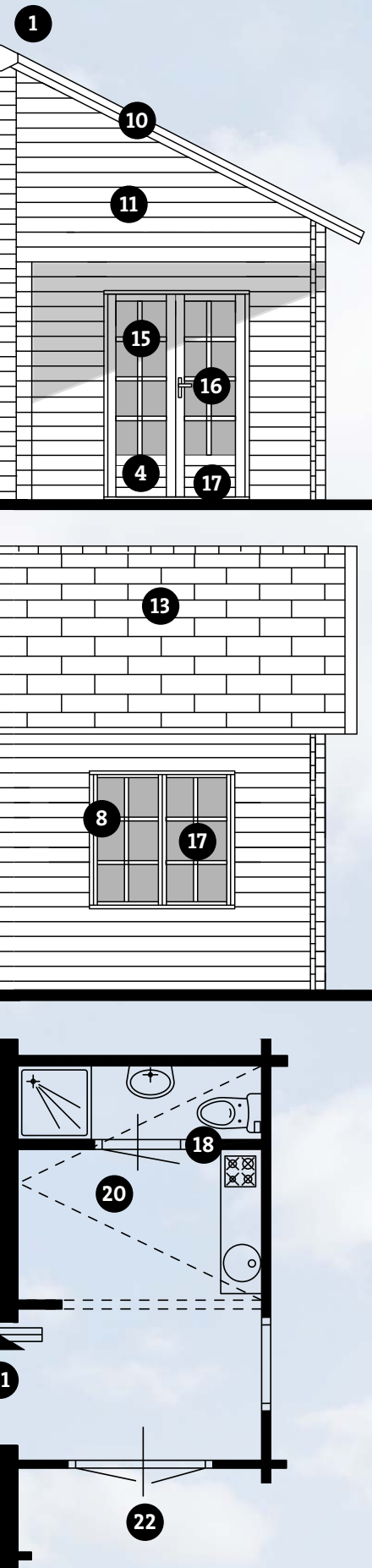
7 Roof calculated to allow for snow load.

8 Roof boards 19 mm thickness tongue and groove.

9 Almost any dimensions possible, ask about the various options or see pages 54 and 55.



LUGARDE LUXURY LOG CABINS



ADVANTAGES AND OPTIONS:

- 10 A choice between a pitched roof, flat roof, pent roof or an asymmetric roof.
- 11 Simple stack method.
- 12 Log cabins fitted as standard with pressure treated foundation beams.
- 13 A choice of 5 shingle colours.



- 14 Premium 44 mm or 68 mm north European pine.



- 15 Various types of windows and doors, single or double glazing, see page 89.
- 16 Brass or chrome metalwork.

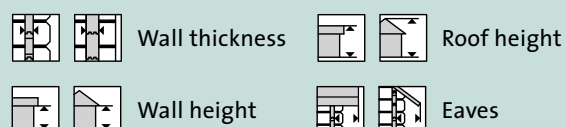


- 17 Door fitted with aluminium wear strip to protect the threshold.



- 18 Self positioning internal walls available.
- 19 Installation of fixed internal walls.
- 20 Optional mezzanine floor.
- 21 Optional steps leading to mezzanine floor.
- 22 Option of built-in canopy (almost any size).
- 23 Option of log cabin pre treatment in 4 colours!
- 24 Option of floor consisting of 19 mm floor boards, skirting-boards and impregnated intermediate beams.

Explanation of symbols



CREATE YOUR OWN LOG CABIN

Think, sketch & create

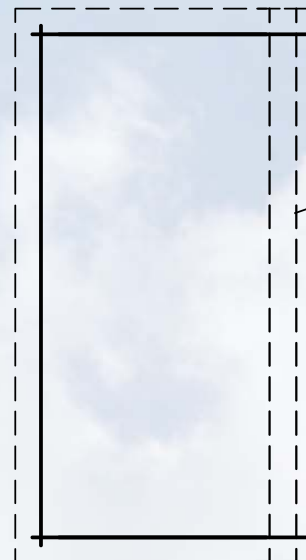
A. Adapting an existing model

You have seen a log cabin in our brochure but you want to adapt it.

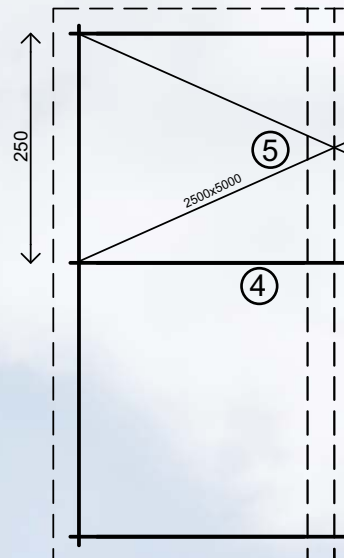
Take the following steps:

1. Download the construction drawing from our website www.lugarde.com
2. Mark your changes on the drawing or use the drawing as a template.
 - If you wish, your Lugarde dealer can advise you on the changes you want to make.
 - The roof construction has been calculated as standard for shingles and roof tile sheets. If actual roof tiles are to be used, the roof will have to be reinforced. Note: this is not possible on every size of log cabin. Check with your Lugarde dealer.
 - The details given on these pages concerning the custom range are all merely guidelines. Lugarde may deviate from these specifications for technical and/or structural reasons. Wherever possible, we will discuss the situation with your dealer and you.

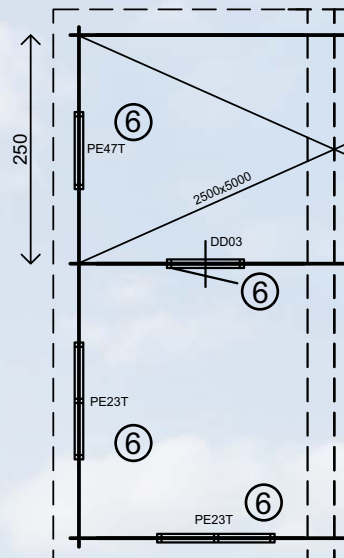
Lugarde adheres to guidelines based on strength calculations and particular standards.



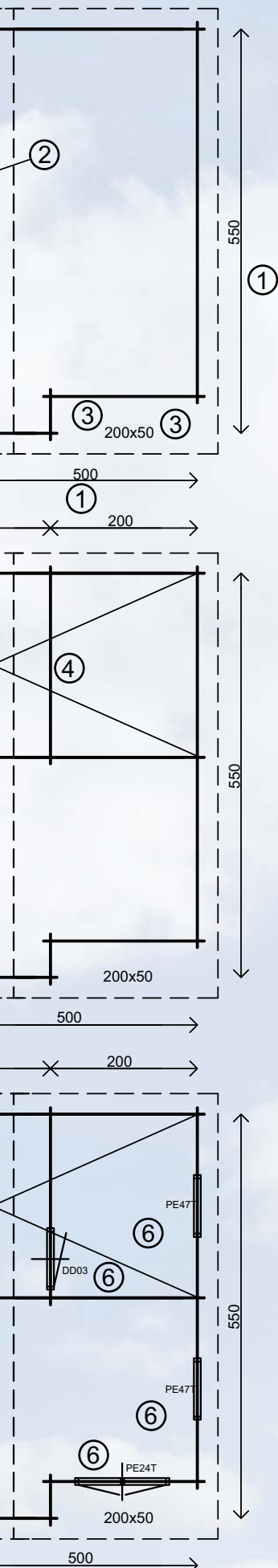
300



300



Let your dreams become reality and discover Lugarde's custom solutions, THE option of creating your own log cabin with YOUR own dimensions. Anything is possible and no idea will sound too crazy to us, YOUR own style. That is what Lugarde stands for.



B. Create your own log cabin

You have not found your perfect log cabin, so the solution is to design it yourself.

Follow the steps below:

1. Decide the dimensions you want for your log cabin (front x depth).
E.g. 500 x 550 cm, see sample drawing.
Dimensions are measured from outer side of wall to outer side of wall, excl. the eaves and excl. the "ears" of the chalet milling.

2. Determine what type roof you want. You have a choice between:

- Pent roof
- Flat roof
- Pitched roof
- A-symmetric roof

If you want an A-symmetric or pitched roof, then please indicate a dotted ridge line in your sketch. Also indicate how the ridge should run (for an a-symmetric roof this is not central).

4. Decide whether you want internal walls and, if so, where (wall heights go up to the roof as standard).

5. If you want an mezzanine, indicate this with a cross on your drawing (see sample drawing). In this case, internal walls support the underside of the mezzanine floor.

6. Decide the position of the windows and doors and indicate which type by using the codes which are located at the back of the brochure.

7. Other possible options are:

- Floor
- Floor insulation
- Roof insulation
- Roof insulation
- Roof insulation
- Steps leading to the mezzanine
- Impregnation with a choice of 4 colours, using plunge method.

If you wish, your Lugarde dealer can advise you on the design of your log cabin.

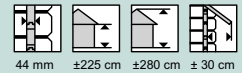
RANGE OF LUXURY 44 MM AND 68 MM LOG CABINS

All models are delivered with windows and doors fitted with real glass, pressure treated foundation beams and a choice of chrome or brass metalwork. A wooden floor is optional. For the shingled roof, you have a choice of 5 colours: green, red, black, brown or blue. The roofs are delivered in loose parts: purlins, roof sections and shingles. All log cabins are delivered exclusive of set-up. The single doors are always hinged on the left from the outside; if you want your door to open from the right, please indicate this on your order (NO extra charge).

For double doors, the right door is always the master door.



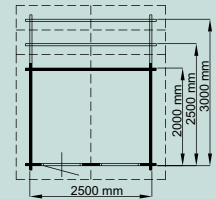
BARCELONA LOG CABIN / 44 mm



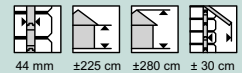
Standard design with 1 top-hung window PX44 and a single door PX45.

Article number

- approx. 250 x 200 cm BB05
- approx. 250 x 250 cm BB06
- approx. 250 x 300 cm BB07



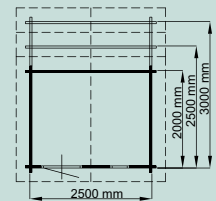
AMSTERDAM LOG CABIN / 44 mm



Standard design with 1 fixed window PJO6 and a single door DD02.

Article number

- approx. 250 x 200 cm BA15
- approx. 250 x 250 cm BA16
- approx. 250 x 300 cm BA17



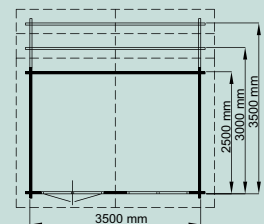
ODENSE LOG CABIN / 44 mm



Standard design with 1 casement window PE23 (opening outwards) and a double door PE24.

Article number

- approx. 350 x 250 cm BO11
- approx. 350 x 300 cm BO12
- approx. 350 x 350 cm BO13



* These log cabins can also be delivered with a canopy and/or with a veranda. These log cabins are also available in 68 mm.



44 mm comes as standard with a diamond head.
(Straight head available on request only).



68 mm comes as standard with a straight head.

NICK LOG CABIN / 44 MM EN 68 MM

Standard design with a casement window PE44T and a double door PE45T. Window and door are fitted with double glazing.



Article number 44 mm

approx. 400 x 300 cm

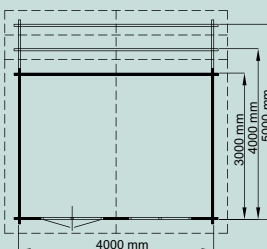
BN01T

approx. 400 x 400 cm

BN02T

approx. 400 x 500 cm

BN03T



NEBRASKA LOG CABIN / 44 MM

Standard design with 2 windows PJ07 (incl. ventilation grates) and a double door PE26. The door is constructed as standard with safety glass 4 mm thick. The Nebraska in the photo has an extra window on the side. This is not a standard feature.



Article number 44 mm

approx. 400 x 300 cm

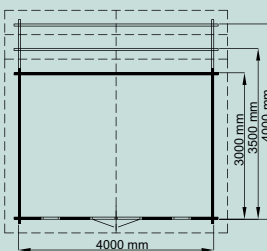
BN07

approx. 400 x 350 cm

BN08

approx. 400 x 400 cm

BN09



ARIZONA LOG CABIN / 44 MM

Standard design with 2 top-hung windows PX44 and a double door PE24.



Article number

approx. 300 x 300 cm

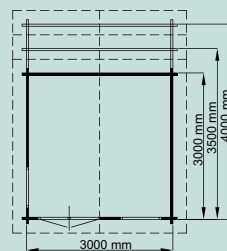
BA05

approx. 300 x 350 cm

BA06

approx. 300 x 400 cm

BA07

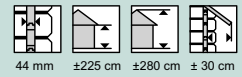


* It goes without saying that the log cabins on these pages can also be adapted to your wishes. For further information see pages 54/55.

RANGE OF LUXURY
44 MM AND 68 MM
LOG CABINS



ROMA
LOG CABIN

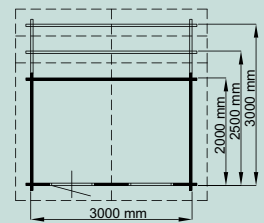


/ 44 mm

Standard design with a top-hung window PX44 and a single door PX45.

Article number

- approx. 300 x 200 cm BR01
- approx. 300 x 250 cm BR02
- ca 300 x 300 cm BR03



ALABAMA
LOG CABIN

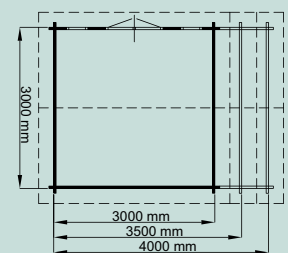


/ 44 mm

Standard design with 2 fixed windows PJ07 (incl. ventilation grates) and a double door PE26. Door is fitted with safety glass 4 mm thick. The Alabama in the photo has 2 extra windows PJ07. This is not a standard feature.

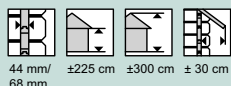
Article number

- approx. 300 x 300 cm BA09
- approx. 300 x 350 cm BA10
- approx. 300 x 400 cm BA11



* These log cabins can also be delivered with a canopy and/or with a veranda. These log cabins are also available in 68 mm.

MALIBU LOG CABIN



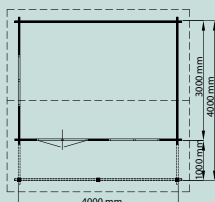
**approx. 400 x 400 cm /
44 mm and 68 mm**

Standard design with 2 casement windows PE23T (opening outwards) and a double door PE24T. Windows and door are fitted with double glazing. Includes a built-in side canopy measuring approx. 100 cm in depth.

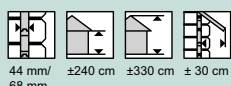
Article number

44 mm BMO4

68 mm BMO5



DUBAI LOG CABIN



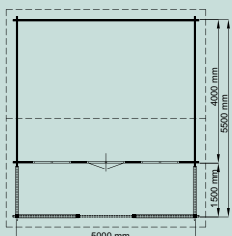
**approx. 550 x 500 cm /
44 mm and 68 mm**

Standard design with 1 double door PE22T and 2 casement windows PE21T. The posts are 12 x 12 cm. Includes a built-in veranda measuring approx. 150 x 500 cm (the bases on the bottom of the poles are non standard).

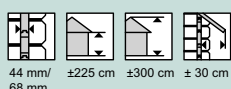
Article number

44 mm BDO6

68 mm BDO7



RUBEN LOG CABIN



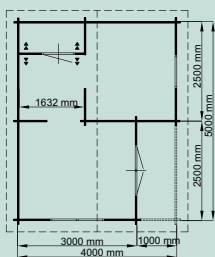
**approx. 400 x 500 cm /
44 mm and 68 mm**

Standard design with 1 double tilt and turn window PE48T (opening inwards), a single tilt and turn window PE47T (opening inwards), a double door PE45T, a single door DDO1, an integral canopy measuring approx. 100 x 250 cm and internal walls as per drawing. Windows and door are fitted with double glazing.

Article number

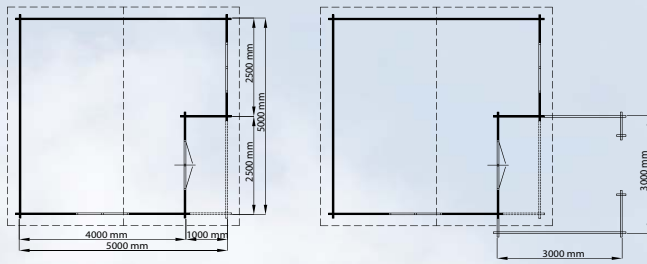
44 mm BRO5

68 mm BRO6



* It goes without saying that the log cabins on these pages can also be adapted to your wishes. For further information see pages 54/55.

Log cabin Paris



RANGE OF LUXURY 44 MM AND 68 MM LOG CABINS



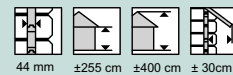
44 mm ±225 cm ±310 cm ±30 cm

PARIS LOG CABIN

approx. 500 x 500 cm / 44 mm

Standard design with 2 casement windows PE23 (opening outwards) and a double door PE24. The integral canopy measures 100 x 250 cm. The veranda is not included (see price list).

Article number BPO1



44 mm ±255 cm ±400 cm ±30 cm

CUBA LOG CABIN

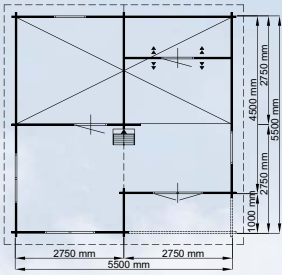
**approx. 550 x 550 cm /
44 mm and 68 mm**

Standard design with 1 double door PE45T, 1 casement window PE44T (opening outwards) and 1 single tilt and turn window PE47T (opening inwards), windows and door are fitted with double glazing. The integral canopy measuring approx. 275 x 100 cm, internal walls and an attic complete with steps as per the drawing. Pictured tiled roof is not a standard feature.

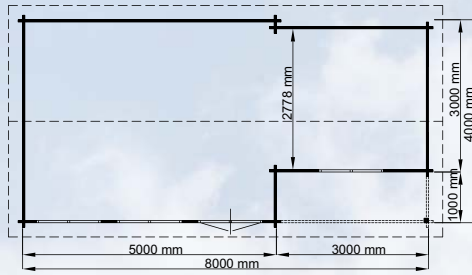
Article number

44 mm BC10
68 mm BC11

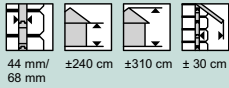
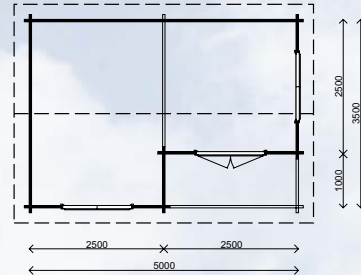
Log cabin Cuba



Log cabin Lissabon



Log cabin Toronto



44 mm/ ±240 cm ±310 cm ± 30 cm
68 mm

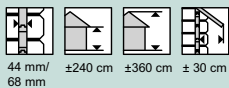
LISBON LOG CABIN

approx. 400 x 800 cm / 44 mm and 68 mm

Standard design with 3 casement windows PE44T and 1 double door PE45T. The integral canopy measures 100 x 300 cm. Windows and door are fitted with double glazing. The Lisbon in this photo is constructed in 68 mm.

Article number

44 mm BL20
68 mm BL21



44 mm/ ±240 cm ±360 cm ± 30 cm
68 mm

TORONTO LOG CABIN

approx. 350 x 500 cm / 44 mm and 68 mm

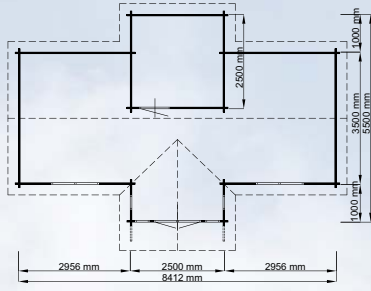
Standard design with 1 double door PE45T and 2 casement windows PE44T. The integral canopy measures approx. 100 x 250 cm.

Article number

44 mm BT04
68 mm BT05



* It goes without saying that the log cabins on these pages can also be adapted to your wishes. For further information see pages 54/55.

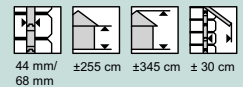


RANGE OF LUXURY
44 MM AND 68 MM
LOG CABINS



DAISY LOG CABIN

approx. 550 x 850 cm /
44 mm and 68 mm



Standard design with 2 casement windows PE44T (opening outwards), a double door PE45T, 4 fixed windows PJO7T (incl. ventilation grates) and a door DDO1. Windows and door are fitted with double glazing. Includes an internal wall as per the drawing.

Article number

44 mm BDO3
68 mm BDO5

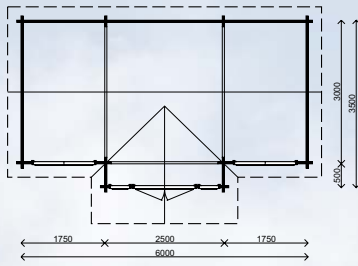
THE PICTURES ON THIS PAGE ARE VARIATIONS ON THE LOG CABIN DAISY

LUGARDE

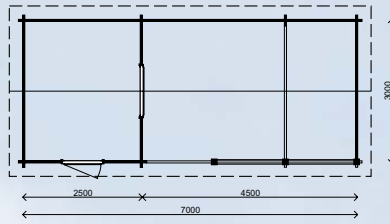


* It goes without saying that the log cabins on these pages can also be adapted to your wishes.
For further information see pages 54/55.

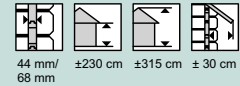
Log cabin Brooklyn



Log cabin Moscow



RANGE OF LUXURY
44 MM AND 68 MM
LOG CABINS



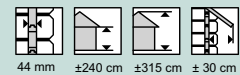
**BROOKLYN
LOG CABIN**

**approx. 350 x 600 cm /
44 mm and 68 mm**

Standard design with 1 double door PE45T, 2 casement windows PE44T (opening outwards) and 2 fixed windows incl. ventilation grates PJo7T, windows and door are fitted with double glazing.

Article number

44 mm	BBo8
68 mm	BB09



**MOSCOW
LOG CABIN**

**approx. 300 x 700 cm /
44 mm**

Standard design with 1 single door PR29 and 1 casement window PR28 (opening outwards). Window and door are shown without cross bars). Including a built-in canopy measuring 300 x 450 cm with solid back- and side wall with railings on the front. The posts are 12 x 12 cm.

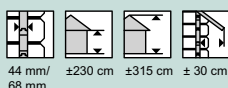
Article number

44 mm	BMo3
-------	------



KINGSWOOD LOG CABIN

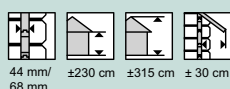
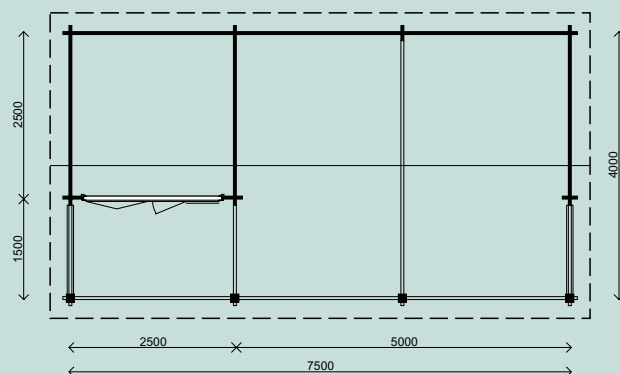
approx. 400 x 750 cm / 44 mm



Standard design with a 4-panel folding door VLO1H, a built-in canopy measuring 150 cm, solid back walls and on the side railings. The posts are 12 x 12 cm.

Article number

44 mm BK01



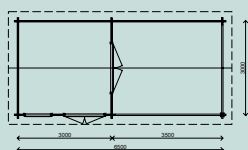
MALLORCA LOG CABIN

approx. 300 x 650 cm /
44 mm and 68 mm

Standard design with 1 double door PE50T (pictured without cross bars), 1 double door PE45T and a single tilt and turn window PE47T (opening inwards). All doors and windows are fitted with double glazing. A built-in canopy measuring 300 x 350 cm with a solid wall. The posts are 12 x 12 cm.

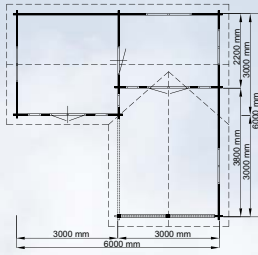
Article number

44 mm
BM05
68 mm
BM06

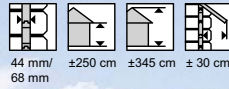


* It goes without saying that the log cabins on these pages can also be adapted to your wishes. For further information see pages 54/55.

Log cabin Geneve



RANGE OF LUXURY
44 MM AND 68 MM
LOG CABINS



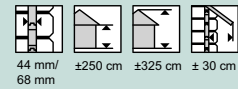
GENEVA LOG CABIN

**approx. 600 x 600 cm /
44 mm and 68 mm**

Standard design with 4 case-
ment windows PE44T, 5 fixed
windows PJO7T (incl. ventilation
grates), 2 double doors PE45T and
1 solid panelled door DDO3. Win-
dows and doors are fitted with
double glazing. Includes a built-
in veranda measuring approx.
300 x 380 cm and an internal
wall as per the drawing.

Article number

44 mm	BG10
68 mm	BG11



VENICE LOG CABIN

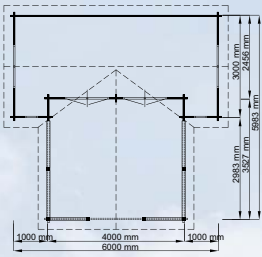
**approx. 600 x 600 cm /
44 mm and 68 mm**

Standard design with 2 case-
ment windows PE40T (opening
outwards), 2 fixed windows
PJO7T incl. ventilation grates and
2 double doors PE41T. Windows
and doors are fitted with double
glazing. Includes a built-in
veranda measuring approx.
400 x 350 cm.

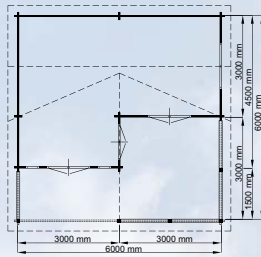
Article number

44 mm	BS03
68 mm	BS04

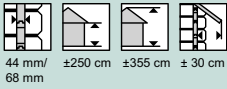
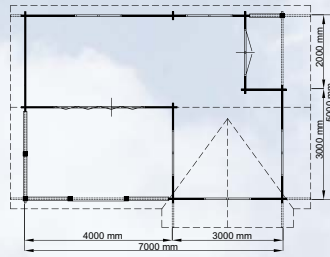
Log cabin Venetië



Log cabin Cyprus



Log cabin Rio



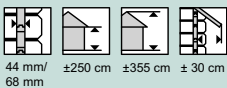
CYPRUS LOG CABIN

approx. 600 x 600 cm / 44 mm and 68 mm

Standard design with 1 casement window PE44T (opening outwards), 2 fixed windows PJO7T incl. ventilation grate and 3 double doors PE45T. Windows and doors are fitted with double glazing. Includes a built-in veranda measuring approx. 600 x 300 cm (13,5 m2).

Article number

- 44 mm BCo8
- 68 mm BCo9



RIO LOG CABIN

approx. 500 x 700 cm / 44 mm and 68 mm

Standard design with 5 casement windows PE23T (opening outwards), 1 double door PE24T and a 4-panel folding door VLo2H. Windows and door are fitted with double glazing. Folding door is fitted with safety glass. Includes a built-in veranda measuring approx. 250 x 400 cm and a built-in canopy measuring approx. 200 x 100 cm. The platform on which the log cabin stands is optional, as are the steps.

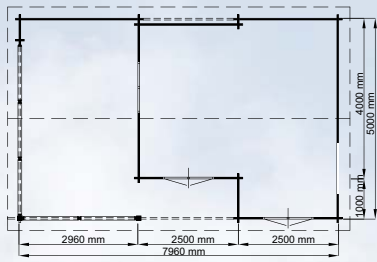
Article number

- 44 mm BRO07
- 68 mm BRO08

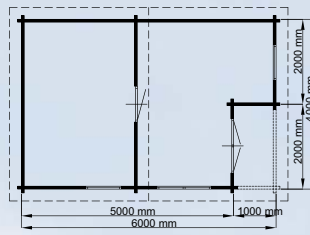


* It goes without saying that the log cabins on these pages can also be adapted to your wishes. For further information see pages 54/55.

Log cabin Sicilië



Log cabin Florence



RANGE OF LUXURY
44 MM AND 68 MM
LOG CABINS



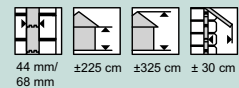
SICILY LOG CABIN

approx. 500 x 800 cm /
44 mm and 68 mm

Standard design with 2 casement windows PE27T (opening outwards) and 2 double doors PE28T. The built-in veranda measures approx. 500 x 300 cm and the built-in canopy is measuring approx. 100 x 250 cm. Pictured tiled roof is not a standard feature.

Article number

44 mm	BSo1
68 mm	BSo2



FLORENCE**
LOG CABIN

approx. 600 x 400 cm /
44 mm and 68 mm

Standard design with 2 single tilt and turn windows PE47T (opening inwards), 1 casement window PE44T (opening outwards), 1 double door PE45T and 1 solid panelled door DDo3. Windows and door are fitted with double glazing.

Article number

44 mm	BFo1
68 mm	BFo2

** Includes an internal wall as per the drawing and a built-in canopy measuring approx. 100x200 cm. The log cabin in this photo is constructed in 68 mm.



BONAIRE LOG CABIN

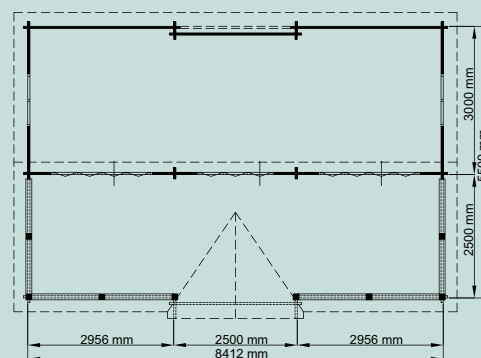


44 mm ±255 cm ±355 cm ± 30cm

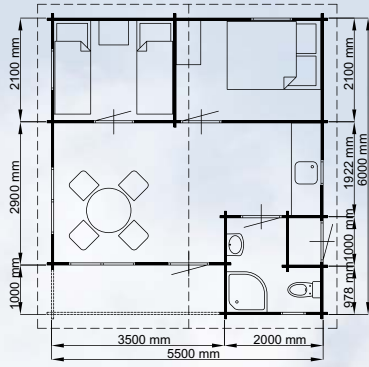
approx. 550 x 850 cm / 44 mm

Standard design with 2 casement windows PE25, 2 folding doors VL01H and 1 folding door DL01H. Windows and folding doors are fitted with safety glass. Includes a built-in veranda measuring approx. 250 x 850 cm and railings as pictured in the photo.

**Artikel-
nummer
BB03**



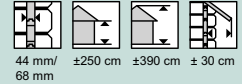
* It goes without saying that the log cabins on these pages can also be adapted to your wishes. For further information see pages 54/55.



RANGE OF LUXURY HOLIDAY HOMES (44 MM AND 68 MM)



MADRID LOG CABIN



**approx. 550 x 600 cm /
44 mm and 68 mm**

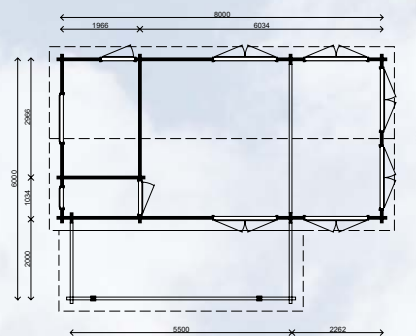
Standard design with 2 double tilt and turn windows PE48T (opening inwards), 2 single tilt and turn windows PE47T, 2 toilet top-hung windows PJo8T, 1 single door PE46T, 3 solid panelled doors DDo3 (opening right) and 1 solid door DDo1. The door PE46T and all windows are fitted with double glazing. The built-in canopy measures approx. 350 x 100 cm. Includes internal walls as per the drawing. The roof tiles pictured are not a standard feature.

Article number

44 mm	BM21
68 mm	BM22



LUGARDE IS YOUR
 PERFECT PARTNER
 FOR HOLIDAY HOMES TOO



LUGARDE



68 mm/ ±260 cm ±375 cm ±30 cm

TIMO LOG CABIN

approx. 400 x 800 cm / 68 mm

Standard design with 6 double doors PE50T (pictured without cross-bars), 1 single panelled door DDo3H, 1 single door DDo1H (right-handed), 1 fixed window PJo6T and 1 toilet top-hung window PJo8T. All windows and doors are fitted with double glazing. Including a canopy of 200 x 550 cm with posts 12 x 12 cm. Including internal walls as per drawing.

Article number

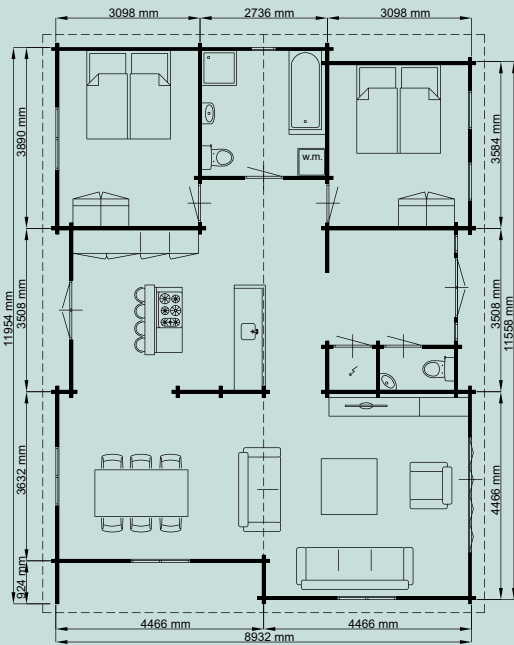
68 mm

BT22

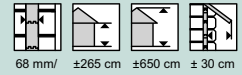


* It goes without saying that the luxury holiday homes on these pages can also be adapted to your wishes. For further information see pages 54/55.

RANGE OF LUXURY
HOLIDAY HOMES
(68 MM)



LYON
HOLIDAY HOME



approx. 900 x 1200 cm / 68 mm

Standard design with 4 casement windows PE44T (opening outwards), 2 single tilt and turn windows PE47T (opening inwards), 2 fixed windows PJo7T (with ventilation grate), 2 double doors PE45T, 5 solid panelled doors DDo3 (one of which opens to the right), 1 folding door VLo2H and 1 toilet top-hung window PJo8T. All windows and doors (except folding door) are fitted with double glazing. Includes internal walls as per the drawing. The roof tiles and skylights pictured are not a standard feature.

Article number

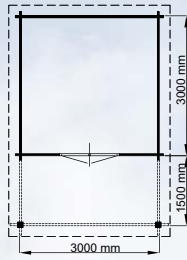
68 mm BLo2



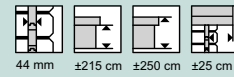


* It goes without saying that the luxury holiday homes on these pages can also be adapted to your wishes. For further information see pages 54/55.

Log cabin Aberdeen



RANGE OF LUXURY
44 MM AND 68 MM
LOG CABINS WITH A FLAT ROOF

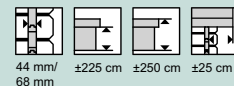


ABERDEEN
LOG CABIN

approx. 300 x 450 cm /
44 mm

Standard design with a double door PE50 and a canopy measuring approx. 150 cm. The posts are 12 x 12 cm.

Article number BA01



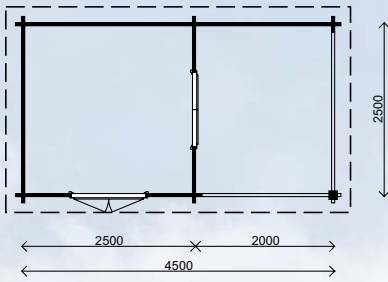
OSLO LOG CABIN

approx. 250 x 450 cm /
44 mm

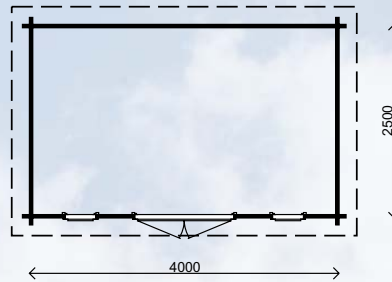
Standard design with 1 double door PE22 and 1 casement window PE21 (opening outwards). Includes a solid wall measuring 200 cm and a post of 12 x 12 cm.

Article number BO14

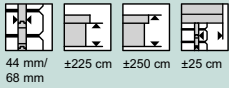
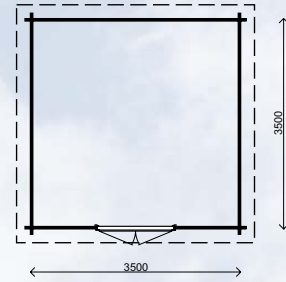
Log cabin Oslo



Log cabin Helsinki



Log cabin Laren



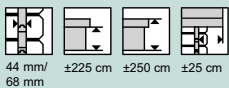
HELSINKI LOG CABIN

**approx. 400 x 250 cm /
44 mm and 68 mm**

Standard design with 1 double door PE45T and 2 fixed windows PJO7T incl. ventilation grate. Windows and door are fitted with double glazing.

Article number

44 mm	BH04
68 mm	BH05



LAREN LOG CABIN

**approx. 350 x 350 cm /
44 mm and 68 mm**

Standard design with 1 double door PE45T, fitted with double glazing.

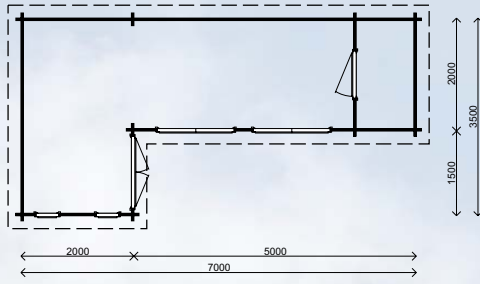
Article number

44 mm	BL22
68 mm	BL23

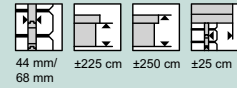
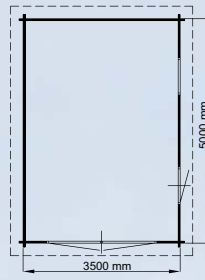


* It goes without saying that the log cabins on these pages can also be adapted to your wishes. For further information see pages 54/55.

Log cabin Bordeaux



Garage Devon



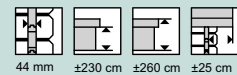
**BORDEAUX
LOG CABIN**

**approx. 350 x 700 cm /
44 mm and 68 mm**

Standard design with 1 double door PE45T, 1 solid door DDo1H, 2 double tilt and turn windows PE48T (opening inwards) and 2 fixed windows PJo6T. Doors and windows are fitted with double glazing. Includes an internal wall measuring approx. 200 cm.

Article number

44 mm BB10
68 mm BB11



GARAGE DEVON

WITH A FLAT ROOF

**approx. 350 x 500 cm /
44mm**

Standard design with 1 top-hung window PX37, 1 single door PX39 and a pinewood double garage door GDo2.

Article number BGo7

SPECIFICATIONS AND OTHER INFORMATION

Premium quality northern European pine is the foundation of all Lugarde summerhouses, log cabins and verandas. In these countries there are strict government regulations in place to ensure that more trees are planted than are chopped down, so that the ecological balance is maintained. Lugarde guarantees that it makes a point of choosing high-quality raw materials and accessories, delivered with expert treatment and handling. Lugarde allows the wood to dry to a moisture content of approx. 12-14% (kiln dried) to prevent the wood from warping as much as possible. All summerhouses and log cabins have been or will be calculated statically.

PRIMA 3=1 SYSTEM SUMMERHOUSES

The walls of the Prima 3=1 system involve a technique, developed by Lugarde, whereby the milled wall sections slot perfectly into the corresponding corner uprights. The corner uprights are fitted on the inside with slide-in aluminium strips, a system that greatly enhances the strength and durability of the summerhouse (no matter what the weather). The Prima 3=1 system is an extremely stable construction that is easy to assemble. The walls are put together without nails or screws, allowing for any warping of the wood (see example of Prima 3=1 system at the front of the brochure).

LOG CABINS

The log cabin system is also a stack wood construction but with chalet milling in the corners, see example on page 57. The log cabins come in a wood thickness of 44 mm but can also be delivered in a wood thickness of 68 mm. Because Lugarde is responsible for all aspects of production, dimensions can be flexible to suit customers' needs. For further information see pages 54 and 55.

INSULATING ROOF AND/OR FLOOR

Depending on what you want to use your summerhouse or log cabin for, you can also have it fitted with roof and/or floor insulation. For a garden shed this is usually not necessary, but if you want your log cabin or summerhouse to serve as a guestroom or office, for example, then insulation is advisable. Floor insulation with a thickness of 4 cm is simple to apply and therefore relatively cheap because the insulation is laid beneath the wooden floor. The roof insulation consists of insulation plates (likewise 4 cm thick), which are installed between the shingles and the roof boards using long clout head nails (included). Other insulation options include double-glazed windows and doors. See page on windows and doors, plus our price list.

WINDOWS AND DOORS

Lugarde has a very extensive range of windows and doors: with and without cross-bars, with single glazing or double glazing, with safety glass, with lead strips, casement windows, top-hung windows, tilt and turn windows, fixed windows, windows with ventilation grates and folding doors. The double frame cross-bars for single & double glazed windows and doors are supplied for both outside and inside and are easy to remove. This is a very useful feature should you want to change the design of your summerhouse/log cabin or if you need to clean or paint the windows/doors.

IF YOU OPT FOR DIFFERENT WINDOWS AND DOORS

If you want different types of windows/doors, then simply substitute the windows/doors you require to your chosen design and add or subtract the difference in costs (See price lists Windows/Doors). All single doors are LEFT-handed as standard; if you want a right-handed door, you must specify this on your order (no extra charge). For double doors, the RIGHT door is the master door.

RAISING WALL HEIGHT

It may sometimes be necessary to raise the height of the walls if, for example, you opt for double glazing or want to interlink various summerhouses or log cabins or if you opt for an attic in a log cabin. Please refer to our price list. E.g. a log cabin measuring 300 x 300 cm: raising by 1 wall section = 12 running metres at per m1.

WINDOW SHUTTERS

The window shutters can be used on (almost) all windows, see photo on page 62 and the price list. Make sure the space next to the window is at least half the width of the window.

DELIVERY ALWAYS ROADSIDE

All products from Lugarde are ALWAYS delivered roadside.

PACKING/KIT INSPECTION

All Lugarde products are packed in environmentally-friendly film that you may be able to re-use. We recommend that you inspect the contents of the kit within 8 days of receipt using the enclosed parts list, and notify your dealer or Lugarde immediately in the unlikely event that anything is missing or damaged.

KIT BAG

The kit bag holds the construction drawing, list of materials, assembly instructions, logbook and all the fastenings. If the construction drawing and/or assembly instructions are missing, call us or download them from our website.



LOGBOOK

When your summerhouse or log cabin is delivered you will receive a logbook (in the kit bag) containing numerous tips and space for notes, e.g., purchase date, wood treatment, colour numbers, paint, dealer's name, type of summerhouse, order number, etc. etc.

GIFT VOUCHER

We always enjoy receiving feedback and photos from our customers' summerhouses or log cabins, and if your photo can be used in our next brochure you will receive a gift voucher worth 85 pounds.

WARRANTY AND COMPLAINTS PROCEDURE

Lugarde grants a 5-year warranty on manufacturing or construction faults; damage caused by humans, animals or natural disasters does NOT fall under the warranty. Complaints as a result of a poorly laid foundation or faulty assembly, poor maintenance and/or the wrong maintenance materials do NOT fall under the warranty (see also maintenance).

ASSEMBLY

Lugarde has a list of select independent assembly companies that can assemble your summerhouse/log cabin for an extra charge and can also lay foundations or carry out any other necessary additional work. For further information, please contact the assembly company yourself.

TIP! Please ensure that there is sufficient clearance (work space) around the summerhouse to facilitate assembly work and (re) treatment of the wood, amongst other things.

PREPARING THE FOUNDATIONS

All summerhouses/log cabins are delivered inclusive of pressure impregnated foundation beams. Any wooden flooring is also supplied with pressure impregnated floor joists. The laying of perfectly level foundations is the most important part of the preparation work for siting a summerhouse or log cabin. If the foundation is not laid correctly problems can occur later, for example, windows and doors may not function correctly and gaps may appear in the wall sections. Depending on the subsoil, remove earth to a depth of around 20 cm, fill in the hole with yellow sand, then compact and vibrate the entire area. Next lay a floor of tiles or concrete slabs – once again the most important thing is to ensure that the entire area is perfectly level. The floor must always be above ground level, and we recommend putting a layer of gravel all the way round the summerhouse to protect it from splashing (rain) water, in case of doubts or queries about the subsoil, you can always call your dealer or Lugarde – please also refer to our logbook.

BUILDING PERMIT

For a summerhouse or log cabin, you are in many cases required to apply for a building permit or you may have a duty to report it. Please contact your local authority for further information or ask your dealer.

TREATMENT AND MAINTENANCE

All summerhouses and log cabins are delivered untreated as standard. We have no control over the elements. Wind, rain and sun have free rein. To provide optimum protection for your summerhouse, log cabin or veranda against the effects of the weather, you must treat the wood as quickly as possible – internally and externally. We recommend treating the wood first of all with impregnating agent after assembly. Then you can treat the summerhouse with non-transparent or transparent dye stain, e.g. from Lugarde. Combining impregnating agent with dye stain provides the best results. Lugarde has developed an excellent system for this purpose together with a well-known paint manufacturer – a system that focuses on quality and care for the environment.

ARRANGE TO HAVE YOUR SCABIN/SUMMERHOUSE/VERANDA IMPREGNATED WITH A CHOICE BETWEEN 4 COLOURS!

You can also have your summerhouse or log cabin impregnated by Lugarde – this is done with a plunge method. First the wood will be pre-treated and then it will be treated with the colour of your choice. The wood is then optimally protected for 2-5 years (depending on weather Conditions). There is then no need to use impregnating agent (see sample colours on pages 80 and 81. Retreating can be done with the same stain or a different colour stain/paint.

For information on the extra charges relating to impregnating, please refer to our price list.

CONFIRMATION OF ORDER TO DEALER

Once Lugarde has sent the dealer written confirmation of the order (normally within 1 week of the order being placed) it cannot be amended free of charge and will be subject to an alteration fee of 50 pounds. Charges will also be made for any order for a summerhouse or log cabin that is cancelled when the order is ready for dispatch.

CALCULATING THE COST OF A LOG CABIN/SUMMERHOUSE/VERANDA YOURSELF

We have put together a chart in the price lists (matrix) to allow you to work out the cost of the summerhouse, log cabin or veranda yourself. Matrix maximum up to 600 cm. Prices for larger log cabins, summerhouses or veranda's are available on request – you can ask for a draft sketch and a quotation. By arrangement, our design department will prepare a design drawing at a cost of 100 pounds; this amount will be refunded to you as soon as the log cabin/summerhouse/veranda has been delivered.

Of course, you can always call, fax or e-mail your dealer or Lugarde for advice. Telephone ++31 (0) 573 401800; fax ++31 (0) 573 401880; or e-mail: sales@lugarde.nl

Models of summerhouses, log cabins and verandas, building systems, construction drawings, photos and/or text in this brochure or on our website must not be borrowed, reproduced or used in any way whatsoever, either in part or in full, without written consent from Lugarde.

Prices, models and materials are subject to change. We accept no liability for printing errors. Lugarde ® and the Prima 3=1 system are registered trade marks.

The Prima 3=1 system is the property of Lugarde ® / Wuestman B.V.

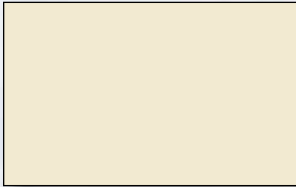
Patent pending EP1 387 912

Brochure issue 2011/2012

Non-transparent stain



234 Antique white



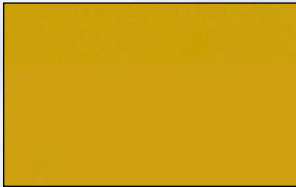
302 Cream



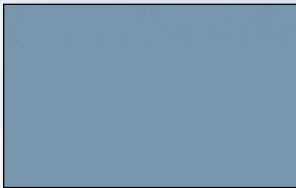
326 Summer yellow



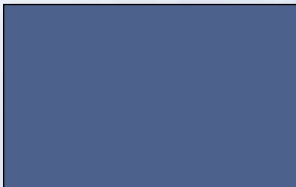
447 Fresco yellow



363 Yellow ochre



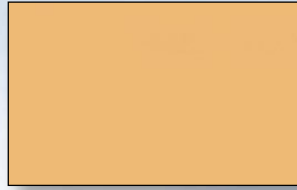
254 Ice blue



129 Old blue



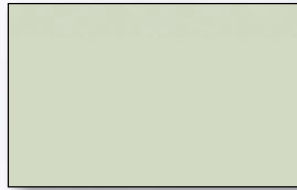
238 Antique blue



518 Salmon pink



13 Burgundy



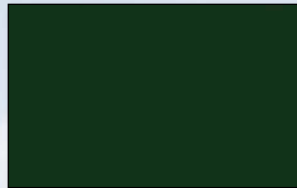
509 Mellow green



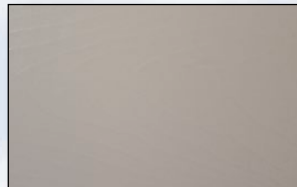
506 Old green



206 Dark green



235 Antique green



352 Window grey

Transparent stain



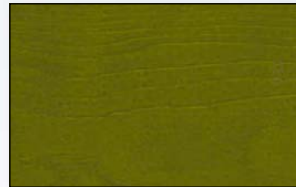
217 Pine



232 Oak



213 Teak



218 Eco-green



Impregnating agent

(colours may vary)

Tip:
Order the paint at the same time as the building, as this will save you shipping costs later.





MG=opal glass. T = thermopane, T-doors standard height 1935 mm. Standard height for single glazing doors is 1800 mm, excluding ph20, ph25, pe50, dd03, mg01, mg02 and all doors with 3 or 4 shutters. All measurements shown are clear opening width.

LUGARDE® LAREN HOLLAND

T +31 (0)573 - 401 800

F +31 (0)573 - 401 880

I www.lugarde.com

E sales@lugarde.nl

LUGARDE



OFFICIAL LUGARDE® DEALER:

© 2011 LUGARDE®